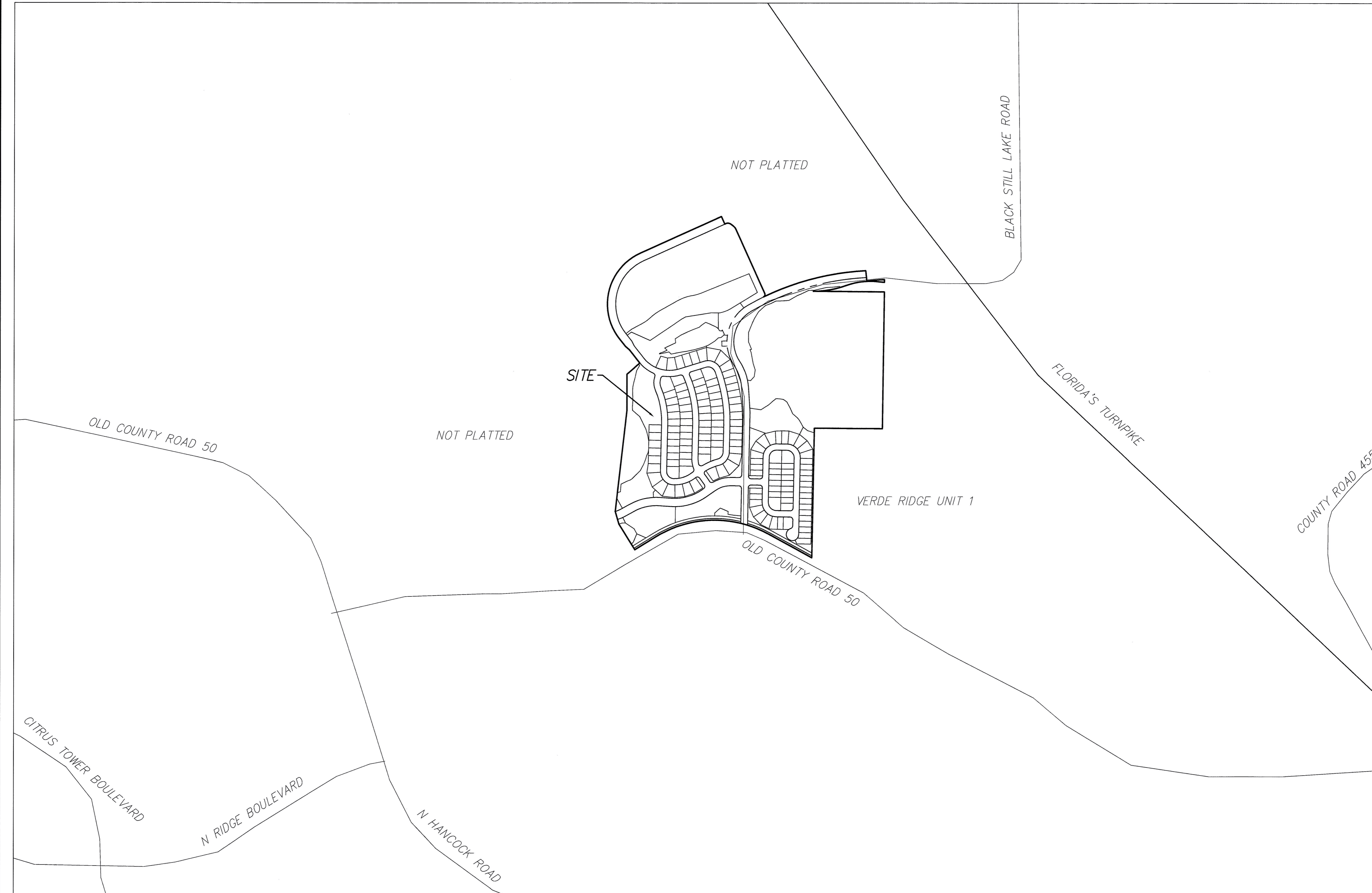


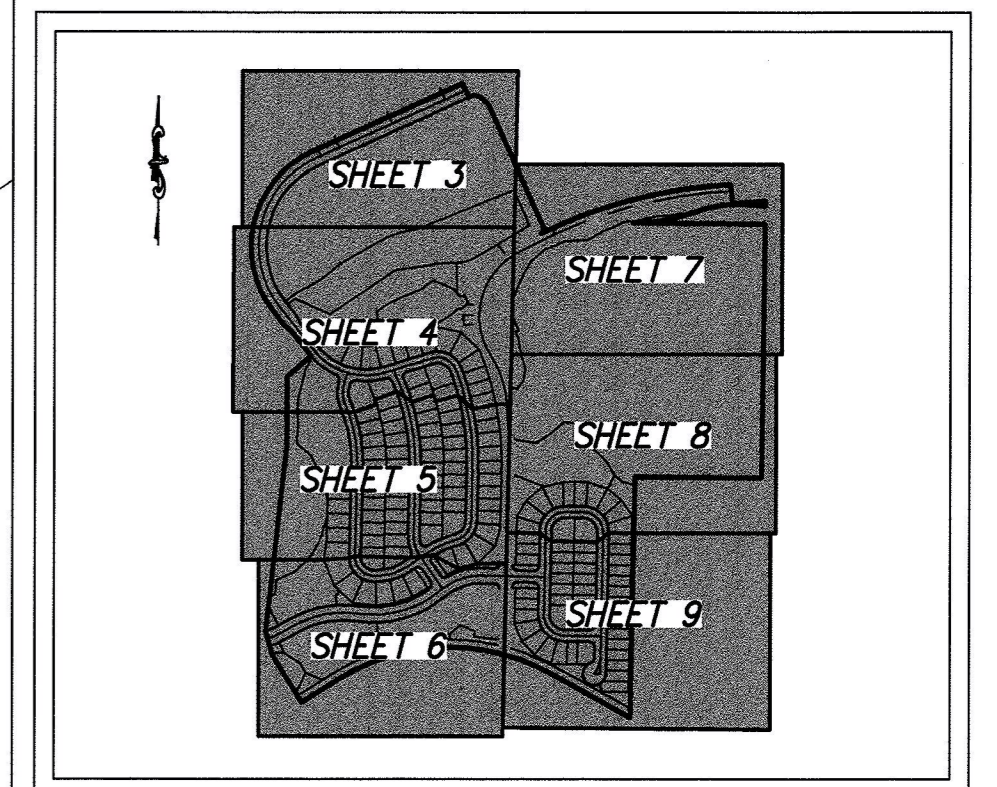
# HIGHLAND RANCH PRIMARY PHASE 1

LOCATED IN SECTIONS 15 AND 16, TOWNSHIP 22 SOUTH, RANGE 26 EAST, CITY OF CLERMONT, LAKE COUNTY, FLORIDA.

PLAT  
BOOK: 66 PAGE: 9



SHEET INDEX	
SHEET 1	COVER SHEET, LEGAL DESCRIPTION, NOTES
SHEET 2	VICINITY MAP
SHEET 3 - 9	PLAT DETAILS



SHEET INDEX  
1" = 1000'

VICINITY MAP  
1" = 500'

**Dewberry**  
LAND DEVELOPMENT &  
TRANSPORTATION ENGINEERING  
PLANNING | SURVEYING & MAPPING  
520 SOUTH MAGNOLIA AVENUE  
ORLANDO, FLORIDA 32801  
PHONE: 407.843.3100 FAX: 407.848.9104  
WWW.DEWBERRY.COM  
CERTIFICATE OF AUTHORIZATION NO. LB 8011

**NOTICE**  
THIS PLAT, AS RECORDED IN ITS GRAPHIC FORM, IS THE OFFICIAL DEPICTION OF THE SUBDIVIDED LANDS DESCRIBED HEREIN AND WILL IN NO CIRCUMSTANCES BE SUPPLANTED IN AUTHORITY BY ANY OTHER GRAPHIC OR DIGITAL FORM OF THE PLAT.  
THERE MAY BE ADDITIONAL RESTRICTIONS THAT ARE NOT RECORDED ON THIS PLAT THAT MAY BE FOUND IN THE PUBLIC RECORDS OF THIS COUNTY.