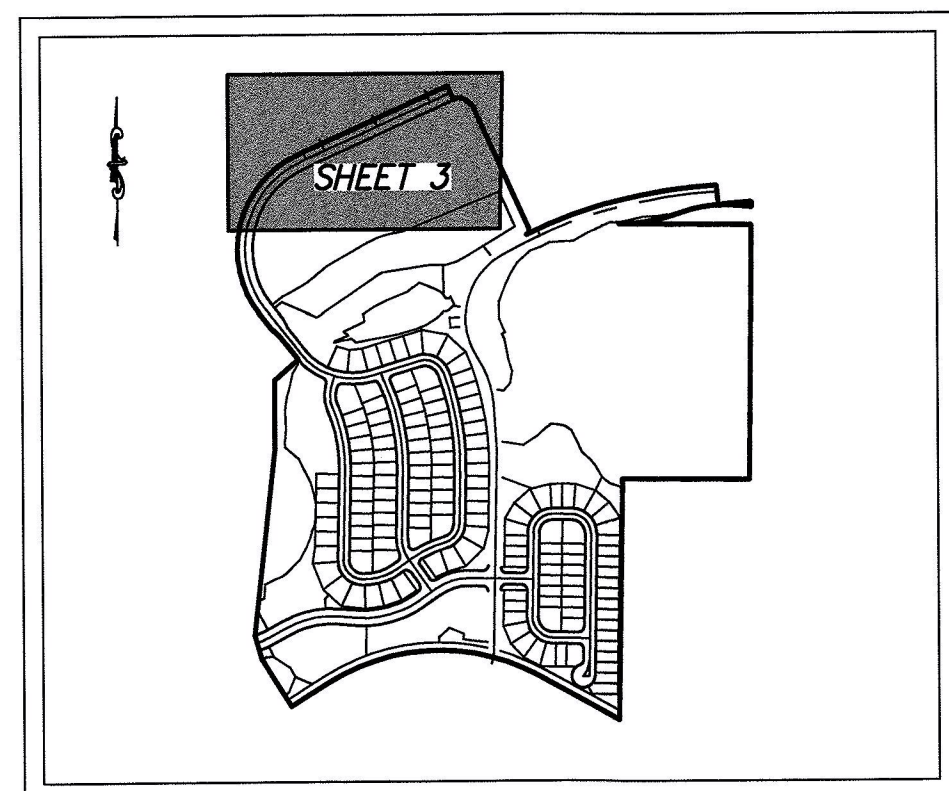


# HIGHLAND RANCH PRIMARY PHASE 1

LOCATED IN SECTIONS 15 AND 16, TOWNSHIP 22 SOUTH, RANGE 26 EAST, CITY OF CLERMONT, LAKE COUNTY, FLORIDA.

PLAT  
BOOK: 66 PAGE: 10  
SHEET 3 OF 9

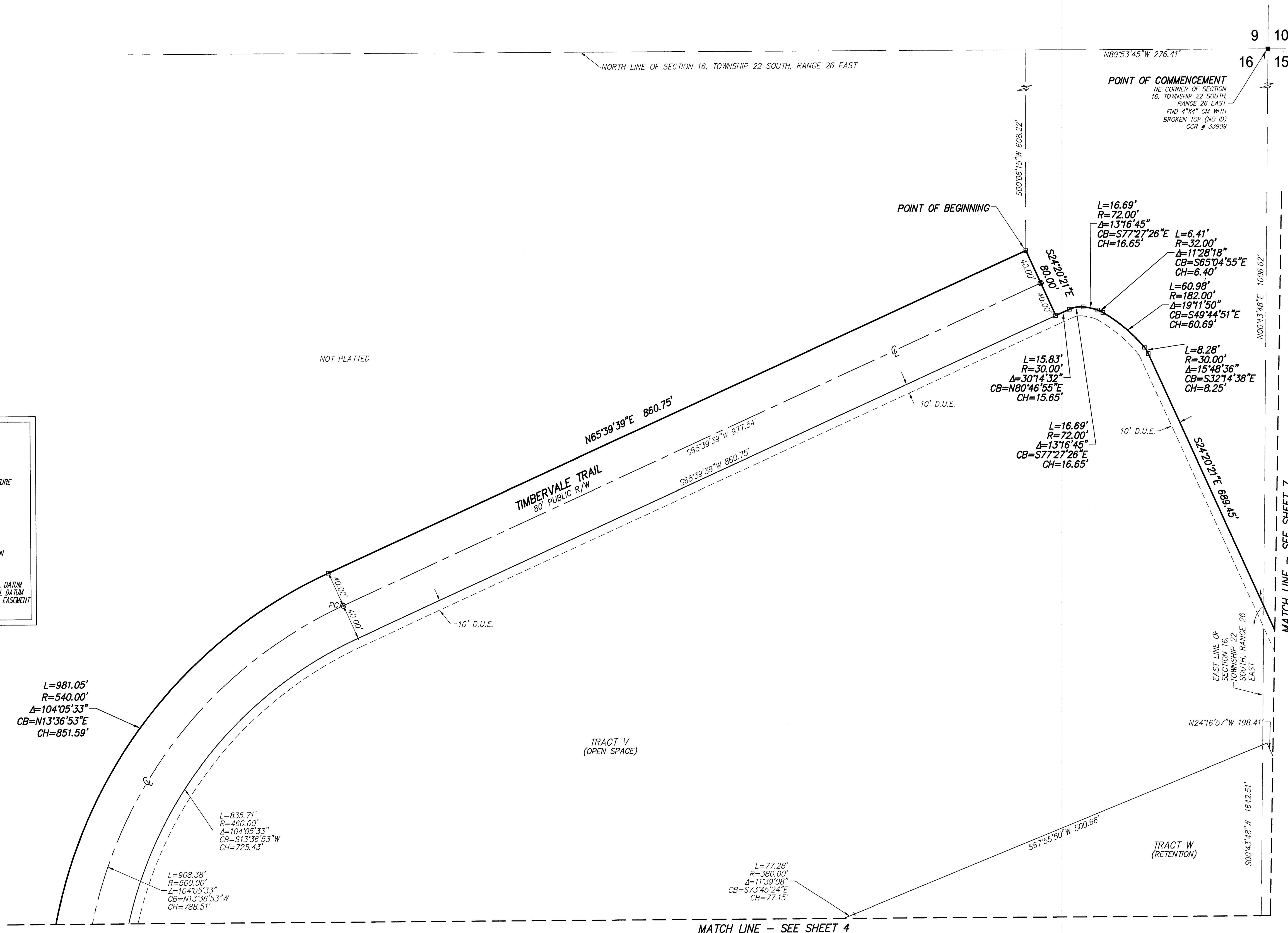
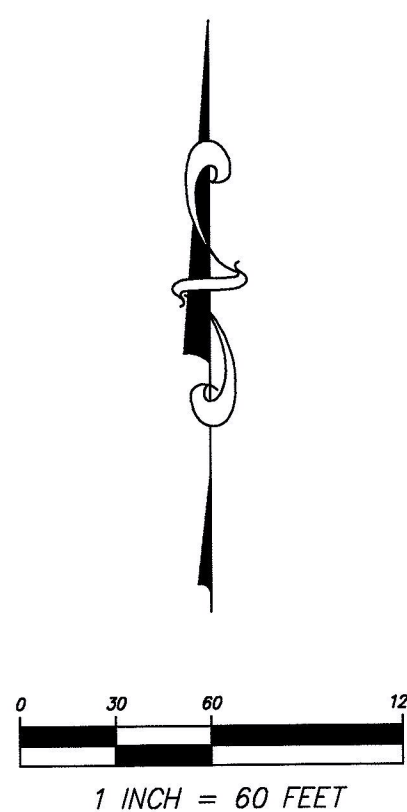
SHEET INDEX	
SHEET 1	COVER SHEET, LEGAL DESCRIPTION, NOTES
SHEET 2	VICINITY MAP
SHEET 3 - 9	PLAT DETAILS



SHEET INDEX  
1" = 1000'

## PLAT LEGEND

± MORE OR LESS	L LENGTH
ID IDENTIFICATION	R RADIUS
ORB OFFICIAL RECORD BOOK	DB DEED BOOK
PB PLAT BOOK	CB CHORD BEARING
PC PAGE	CH CHORD DISTANCE
CCR CERTIFIED CORNER RECORD	PC POINT OF CURVATURE
(TYP) TYPICAL	Δ DELTA (CENTRAL ANGLE)
CL CENTERLINE	PRC POINT OF REVERSE CURVATURE
□ SET 4x4 CONCRETE MONUMENT (PRM LB 8011)	PT POINT OF TANGENCY
PERMANENT REFERENCE MARKER	R/W RIGHT OF WAY
● FOUND NAIL & DISK (AS NOTED)	(R) RADIAL
■ FOUND 4"x4" CONCRETE MONUMENT (AS NOTED)	(NR) NON RADIAL
● SET NAIL & DISK (POP LB 8011)	CM CONCRETE MONUMENT
● PERMANENT CONTROL POINT	LB LICENSED BUSINESS
○ SET 5/8" IRON ROD & CAP (LB 8011)	LS LAND SURVEYOR
● FOUND 1/2" IRON ROD (LB 88)	FDEP FLORIDA DEPARTMENT OF
— CHANGE IN DIRECTION (R/W LINE)	ENVIRONMENTAL PROTECTION
▲ CHANGE IN DIRECTION (UPLAND BUFFER)	EL ELEVATION
D.E DRAINAGE EASEMENT	FEMA FEDERAL EMERGENCY
U.E UTILITY EASEMENT	MANAGEMENT ASSOCIATION
IP IRON PIPE	NGVD NATIONAL GEODETIC VERTICAL DATUM
PI POINT OF INTERSECTION	NAD83 NATIONAL AMERICAN VERTICAL DATUM
D.U.E DRAINAGE AND UTILITY EASEMENT	D.U.W.E DRAINAGE UTILITY AND WALL EASEMENT
	W.E WALL EASEMENT
	S.S.E SANITARY SEWER EASEMENT



## NOTICE

THIS PLAT, AS RECORDED IN ITS GRAPHIC FORM, IS THE OFFICIAL DEPICTION OF THE SUBDIVIDED LANDS DESCRIBED HEREIN AND WILL IN NO CIRCUMSTANCES BE SUPPLANTED IN AUTHORITY BY ANY OTHER GRAPHIC OR DIGITAL FORM OF THE PLAT.

THERE MAY BE ADDITIONAL RESTRICTIONS THAT ARE NOT RECORDED ON THIS PLAT THAT MAY BE FOUND IN THE PUBLIC RECORDS OF THIS COUNTY.

## CURVE TABLE (THIS SHEET ONLY)

CURVE	RADIUS	LENGTH	DELTA	BEARING	CHORD
C1	500.00	908.38	104°05'33"	N13°36'53"W	788.51
C25	460.00	835.71	104°05'33"	S13°36'53"W	725.43
C86	380.00	77.28	11°39'08"	S73°45'24"E	77.15

Drawing name: S:\Back West Taylor Morrison\_99253009\_Platting\_50064519\Platting\Highlands Ranch Primary Phase 1\_surplot.dwg Plot Sheet 3 Oct 01, 2014 12:41pm by: tcordein

**Dewberry** LAND DEVELOPMENT & TRANSPORTATION ENGINEERING  
PLANNING | SURVEYING & MAPPING

520 SOUTH MAGNOLIA AVENUE  
ORLANDO, FLORIDA 32801  
PHONE: 407.843.5120 FAX: 407.848.9104  
WWW.DEWBERRY.COM

CERTIFICATE OF AUTHORIZATION NO. LB 8011